



Equipment for Professionals



**COMMERCIAL
CATERING &
CLEANING
EQUIPMENT**





Contact us:

 +254 725884197

 info@hypermart.co.ke

 www.caterina.co.ke

 sold and serviced by Ramtons



About Us

Caterina was launched by Hypermart Ltd. (the company behind the **Ramtons** brand of appliances) in 2005 to supply the HORECA (Hotel, restaurant and café) industry with quality commercial catering and cleaning equipment. Having served the industry for over 10 years, the brand has earned a reputation for offering quality, long-lasting equipment that provides the necessary durability to withstand heavy commercial use.

From ensuring food is consistent and served in a timely manner, to keeping your establishment clean and hygienic, to coping with busy periods, we understand the high-standards demanded by the food service industry and tailor our product offering to fulfil your needs. We believe in investing in quality, efficient equipment to improve efficiency and free up your time for focus on the activities which your customers truly value.

We offer an extensive range of products to meet your commercial needs. From commercial fryers and blenders to coffee makers to salamanders. Download our catalogue, give us call or visit our showroom to explore our product range. You can also find some of our products at Major retailers and distributors country-wide.

With expert after sales care and a dedicated team of full-time technicians, you can rest assured your equipment is in good hands. Caterina products come with the 'sold and serviced by Ramtons' seal of approval, you can contact us on our toll-free number or visit our service center should you require any technical assistance or spare parts.

Table of

Contents

02

FRYERS

06

TEA URNS

09

OVENS

13

POTATO
PEELERS

15

MEAT
EQUIPMENT

17

FOOD &
DOUGH MIXER

19

ROTISSERIES

21

SALAMANDARS

23

GRIDDLE/
GRILL

25

VEGETABLE
CUTTER

27

JUICE
DISPENSERS

29

SNACK
MAKERS

32

FREEZING
EQUIPMENT

34

UNDER COUNTER
CHILLERS

36

ICE CUBE MAKERS
& ICE CREAM MACHINE

38

SHOWCASE
DISPLAYS

40

MIXING AND BAKERY
EQUIPMENT + ACCESSORIES

42

COFFEE MAKER
AND GRINDER

44

BLENDERS AND
JUICERS

46

CLEANING
EQUIPMENT

49

DISPLAY
WARMERS

51

BAINE
MARIES



FRYERS

Spark Up The Love For Crisp And Delicious Food

Our fryer range guarantees perfect results for your kitchen's fried food.
Your customers will always ask for more of your golden fried treats.

CATERINA FRYER



CODE: CT/109
10LTS SINGLE TANK FRYER
31CM DEEP TABLE TOP

Model: EF101
Power: 3KW
Voltage: 220V
Capacity: 1x10Lts
Size: (465x275x310)mm



CODE: CT/111
17LTS SINGLE TANK FRYER
36CM DEEP TABLE TOP

Model: EF171
Power: 4.8KW
Voltage: 220V
Capacity: 1x17Lts
Size: (525x290x360)mm



CODE: CT/191
10LTS SINGLE TANK FRYER
WITH OUTLET HEAVY DUTY

Model: EF101V
Power: 3KW
Voltage: 220V
Capacity: 1x10Lts
Size: (490x283x345)mm



CODE: CT/192
17LTS SINGLE TANK FRYER
WITH OUTLET HEAVY DUTY

Model: EF171V
Power: 4.8KW
Voltage: 220V
Capacity: 1x17Lts
Size: (490x283x345)mm



CODE: CT/110
2x10LTS DOUBLE TANK FRYER
31CM DEEP TABLE TOP

Model: EF102
Power: 3KWx2
Voltage: 220V
Capacity: 2x10Lts
Size: (560x465x310)mm



CODE: CT/112
2x17LTS DOUBLE TANK FRYER
36CM DEEP TABLE TOP

Model: EF172
Power: 4.8KWx2
Voltage: 220V
Capacity: 2x17Lts
Size: (585x525x360)mm



CODE: CT/193
2x10LTS DOUBLE TANK FRYER
WITH OUTLET HEAVY DUTY

Model: EF102V
Power: 3KWx2
Voltage: 220V
Capacity: 2x10Lts
Size: (510x500x410)mm



CODE: CT/194
2x17LTS DOUBLE TANK FRYER
WITH OUTLET HEAVY DUTY

Model: EF172V
Power: 4.8KWx2
Voltage: 220V
Capacity: 2x17Lts
Size: (510x500x410)mm

CATERINA FRYER



CODE: CT/236
2x10LTS DOUBLE TANK
GAS FRYER TABLE TOP

Model: EF72
Power Gas: 36,000BTU/h
Waste Gas 0.9Kg/h
Meter:
Capacity: 2x10Lts
Size: (580x520x445)mm



CODE: CT/237
2x17LTS DOUBLE TANK
GAS FRYER TABLE TOP

Model: GF172
Power Gas: LPG Gas
Waste Gas 0.9Kg/h
Meter:
Capacity: 2x17Lts
Size: (616x610x530)mm



CODE: CT/123
DOUBLE TANK FRYER
WITH STAND

Model: EF85
Power: 4KWx2
Voltage: 220V
Capacity: 14Lts
Size: (590x510x960)mm



CODE: CT/195
48LTS FRYER + STAND
WITH OUTLET

Model: EF481V
Power: 9KW
Voltage: 380V
Capacity: 48Lts
Size: (850x420x935)mm



CODE: CT/209
ELECTRIC FRYER
WITH CABINET 4 BASKETS

Model: ZH-TCX2
Power: 24KW
Voltage: 380V
Capacity: 48Lts
Size: (800x900x850)mm



CODE: CT/235
GAS DEEP FRYER
WITH STAND 2 BASKETS

Model: EF75
Power Gas: 36,000BTU/h
Waste Gas 0.9Kg/h
Meter:
Capacity: 14Lts
Size: (590x520x980)mm

CATERINA FRYER



CODE: CT/278
GAS FRYER
2 BASKET

Model: ZHRC-1
Power Gas: 37,650BTU/h
Waste Gas 0.9Kg/h
Meter:
Capacity: 30Lts
Size: (430x900x850)mm



CODE: CT/244
GAS FRYER
HIGH PRESSURE

Model: ZHRC-2
Power Gas: 119,800BTU/h
Waste Gas 0.9Kg/h
Meter:
Capacity: 2x17Lts
Size: (800x900x850)mm



CODE: CT/335
GAS FRYER
4 BASKET+CABINET

Model: EF101
Power: 22KW
Tolerance: 1.7Kh/hr
Capacity: 32Lts
Size: (750x700x850)mm



CODE: CT/357
GAS FRYER
HIGH PRESSURE

Power: 3KWx2
Capacity: 2x17Lts
Size: (615x460x970)mm



TEA URNS

Set Up The Tea In Style

For tea time and every time you'd like to dazzle your customers, our elegant tea urns come with various sizes and capabilities to suit your needs.

TEA URNS



CODE: CT/113
ELECTRIC TEA URN WATER BOILER
10LTS WITH LEVEL INDICATOR

Power: 3KW
Voltage: 220V
Capacity: 10Lts
Temperature: 30°C - 110°C



CODE: CT/114
ELECTRIC TEA URN WATER BOILER
20LTS WITH LEVEL INDICATOR

Power: 3KW
Voltage: 220V
Capacity: 20Lts
Temperature: 30°C - 110°C



CODE: CT/115
ELECTRIC TEA URN WATER BOILER
30LTS WITH LEVEL INDICATOR

Power: 3KW
Voltage: 220V
Capacity: 30Lts
Temperature: 30°C - 110°C



CODE: CT/116
ELECTRIC TEA URN WATER BOILER
40LTS WITH LEVEL INDICATOR

Power: 3KW
Voltage: 220V
Capacity: 40Lts
Temperature: 30°C - 110°C



CODE: CT/291
MIXED [MILK & TEA]
BOILER 12LTS

Power: 1.5KW
Voltage: 220V
Capacity: 12Lts
Temperature: 30°C - 110°C



CODE: CT/292
MIXED [MILK & TEA]
BOILER 16LTS

Power: 1.5KW
Voltage: 220V
Capacity: 16Lts
Temperature: 30°C - 110°C



CODE: CT/293
MIXED [MILK & TEA]
BOILER 30LTS

Power: 1.5KW
Voltage: 220V
Capacity: 30Lts
Temperature: 30°C - 110°C



CODE: CT/367
S/STEEL MIXED [MILK & TEA]
BOILER 10LTS

Power: 2KW
Voltage: 220V
Capacity: 10Lts
Temperature: 30°C - 110°C

TEA URNS



CODE: CT/368
S/STEEL MIXED [MILK & TEA]
BOILER 20LTS

Power: 3KW
Voltage: 220V
Capacity: 20Lts
Temperature: 30°C - 110°C



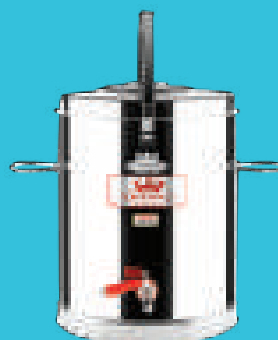
CODE: CT/369
S/STEEL MIXED [MILK & TEA]
BOILER 30LTS

Power: 3KW
Voltage: 220V
Capacity: 30Lts
Temperature: 30°C - 110°C



CODE: CT/370
S/STEEL MIXED [MILK & TEA]
BOILER 40LTS

Power: 3KW
Voltage: 220V
Capacity: 40Lts
Temperature: 30°C - 110°C



CODE: CT/150
DOUBLE JACKET TEA URN
STRAIGHT 7.5LTS

Power: Non Electric
Voltage: Non Electric
Capacity: 7.5Lts



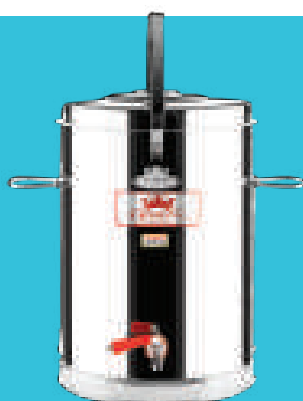
CODE: CT/151
DOUBLE JACKET TEA URN
STRAIGHT 10LTS

Power: Non Electric
Voltage: Non Electric
Capacity: 10Lts



CODE: CT/152
DOUBLE JACKET TEA URN
STRAIGHT 15LTS

Power: Non Electric
Voltage: Non Electric
Capacity: 15Lts



CODE: CT/153
DOUBLE JACKET TEA URN
STRAIGHT 20LTS

Power: Non Electric
Voltage: Non Electric
Capacity: 20Lts



CODE: CT/160
DOUBLE JACKET TEA URN
OVAL 5LTS

Power: Non Electric
Voltage: Non Electric
Capacity: 5Lts



CODE: CT/161
DOUBLE JACKET TEA URN
OVAL 10LTS

Power: Non Electric
Voltage: Non Electric
Capacity: 10Lts



OVENS

Bake More Love

Whether you're looking for single or multiple deck, electric or gas, our commercial ovens will ensure your baked goods are cooked to perfection every time.

CATERINA OVEN



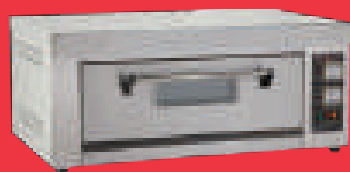
CODE: CT/214
2 DECK ELECTRIC OVEN

Model: PL4
Power: 12.8KW
Voltage: 380V
No. of Trays: 4 Trays
Capacity: 80 Loaves/Hr
Size: (1225x770x1240)mm



CODE: CT/217
3 DECK ELECTRIC OVEN

Model: PL6
Power: 19.2KW
Voltage: 380V
No. of Trays: 6 Trays
Capacity: 120 Loaves/Hr
Size: (1225x770x1540)mm



CODE: CT/135
SINGLE DECK ELECTRIC OVEN

Model: YXD20
Power: 5.7KW
Voltage: 220V
No. of Trays: 2 Trays
Size: (1210x750x520)mm



CODE: CT/234
DOUBLE DECK ELECTRIC OVEN

Model: YXD40
Power: 11.4KW
Voltage: 380V
No. of Trays: 4 Trays
Size: (1210x750x1530)mm



CODE: CT/297
ELECTRIC 5 TRAY
CONVECTION OVEN

Model: NFC5D
Power: 9KW
Voltage: 415V
No. of Trays: 5 Trays
Size: (900x1110x730)mm



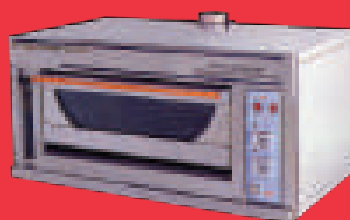
CODE: CT/328
ELECTRIC COMBI STEAMER
S/STEEL GRID SHELF

Model:
Power: 18Kw/9KW
Voltage: 380V
No. of Trays: 4 Trays
Size: (867x930x930)mm



CODE: CT/283
GAS OVEN SINGLE DECK

Model: FR-12BQ
Power: 60W
Voltage: 220V
Heat Load: 120Mj/Hr
Gas: 2.8Kpa
Pressure:
Size: (1310x963x650)mm



CODE: CT/276
GAS OVEN SINGLE DECK

Model: GR2
Power: 100W
Voltage: 220V
Heat Load: 45Mj/Hr
Gas: 2.8KPa
Pressure:
Size: (1355x800x640)mm

CATERINA OVEN



CODE: CT/277
GAS OVEN DOUBLE DECK

Model: GR4
Power: 0.2KW
Voltage: 220-240V
Gas Pressure: 2.8Kpa
Heat Load: 90Mj/Hr
Size: (1355x800x1410)mm



CODE: CT/358
2 DECK PIZZA OVEN

Capacity: 12" pizza x 2pcs
Voltage: 220-240V
Power: 2.4KW
Temperature: 0~350°C
Dimension: 585x550x430mm
Chamber: 400x400x115mmx2Pcs



CODE: CT/232
SINGLE DECK PIZZA OVEN

Model: EP-01-1
Power: 7.2KW
Voltage: 380V
Temperature: 50°C – 300°C
Size: (890x1100x430)mm



CODE: CT/231
DOUBLE DECK PIZZA OVEN

Model: EP-01-2
Power: 14.4KW
Voltage: 380V
Temperature: 50°C – 300°C
Size: (890x1100x745) mm



CODE: CT/326
TILTING BRAISING PAN
MULTI TASKING

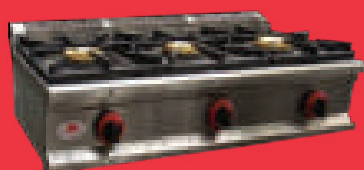
Power: 80778 BTU/Hr
Capacity: 80Lts
Size: 800x900x850+120 mm

Effectively designed for multi-tasking,
such as frying, boiling, grilling and
simmering



CODE: CT/360
TABLE TOP 2 BURNER COOKER

Burner: 2
Type: LPG gas valve
Pan Strong & durable
Support:
Size: 660x490x360mm



CODE: CT/361
TABLE TOP 3 BURNER COOKER

Burner: 3
Type: LPG gas valve
Pan Strong & durable
Support:
Size: 900x490x360mm



CODE: CT/362
TABLE TOP 4 BURNER COOKER

Burner: 4
Type: LPG gas valve
Pan Strong & durable
Support:
Size: 765x800x360mm

CATERINA OVEN



CODE: CT/334
6 GAS BURNER
+ OVEN
- Power: 88992.8 BTU/Hr
- Net Weight: 155Kg
- Size: 1050x750x850+60 mm



CODE: CT/327
4 GAS BURNER OVEN
+ GRIDDLE
- Power: 79500 BTU/Hr
- Net Weight: 212Kg
- Size: 1200x900x850+120 mm



CODE: CT/336
4 PLATE ELECTRIC COOKER
+CABINET
Power: 14Kw
Voltage: 380V
Net Weight: 104Kg
Size: (800x800x850+120)mm



CODE: CT/171
4 GAS BURNER
+ ELECTRIC OVEN
Model: ZH-TT
Power Gas: 117,744 B.T.U/h
Power: 4.8KW
Size: (800x900x850)mm



CODE: CT/162
ELECTRIC PIZZA
CONVEYOR OVEN
Model: YXD-1080
Power: 6.3KW
Voltage: 220V
Size: (1080x555x420)mm



CODE: CT/337
PIZZA MAKER SINGLE
Timer: 15 minutes
Power: 1.75Kw
Voltage: 240V
Size: (580x500x170)mm



POTATO PEELERS

Peeling Perfection

Spend your time ensuring your kitchen is running smoothly and your food is tasting great. The peeling? Leave that to our peelers.

POTATO PEELER



CODE: CT/144
POTATO PEELER 8KG

Model: PP8
Power: 370W
Voltage: 220V
Capacity: 8 Kgs (1-2 Min)
Size: (430x430x725)mm



CODE: CT/145
POTATO PEELER 15KG

Model: PP15
Power: 750W
Voltage: 220V
Capacity: 15 Kgs(1-2 Min)
Size: (475x540x785)mm



CODE: CT/187
POTATO PEELER 30KG

Model: PP30
Power: 1500W
Voltage: 220V
Capacity: 30 Kgs (1 - 2 Min)
Size: - (850x530x800)mm



CODE: CT/274
POTATO CHIPS VEGETABLE CUTTER

Model: MFC23
Power: 0.25KW
Voltage: 220V
Disc Diameter: 204mm
Productivity: 120 Kg/h
Size: (275x580x455)mm
- Ideal for cutting chips, slicing, shredding, grating e.t.c.



MEAT EQUIPMENT

Meat The Best

Get the most out of your quality meat. Our Caterina meat equipment ensures the utmost precision for your mincing, cutting and carving needs.

MEAT EQUIPMENT



CODE: CT/142
MEAT MINCER 25KG 650W

Model: TC12 I
Power: 650W
Voltage: 220V
Productivity: 120 Kg/h
Size: (450x220x340)mm



CODE: CT/143
MEAT MINCER 36KG 750W

Model: TJ22B
Power: 750W
Voltage: 220V
Productivity: 220 Kg/h
Size: (400x240x450)mm



CODE: CT/146
MEAT SLICER 12'' OPEN BLADE

Model: SS300
Power Blade: 280W
Power Slicer: 500W
Voltage: 220V
Slicing Thickness: 1 – 14mm
Diameter: 300mm
Size: (576x624x727)mm



CODE: CT/205
MEAT SLICER COMPACT

Model: RPJ-2
Power: 450W
Voltage: 220V
Thickness: 3mm
Size: (380x500x400) mm



CODE: CT/207
BONE SAW 21MM TABLE TOP

Model: JG210
Power: 1300W
Voltage: 380V
Thickness: 30~250mm
Sawing Speed: 15m/s
Size: (712x780x1689)mm



CODE: CT/168
BONE SAW 30MM + STAND

Model: JG300
Power: 500W
Voltage: 220V
Thickness: 4~180mm
Size: (486x520x836)mm



FOOD & DOUGH MIXER

Mix Some Hearty Treats!

We know how busy it could get and we'd like to make it easy for you to keep serving up the best food for long. So we've gone ahead and made it easy to achieve the consistency you long for, recipe after recipe.

FOOD & DOUGH MIXER



CODE: CT/165
FOOD AND DOUGH MIXER 7LTS

Model: 7H
Power: 300W
Voltage: 220V
Capacity: 7Lts
Size: (400X250X410)mm



CODE: CT/163
FOOD AND DOUGH MIXER 20LTS

Model: 20H
Power: 750W
Voltage: 220V
Capacity: 20Lts
Size: (415x530x780)mm
Speed: 400 revolution/min



CODE: CT/203
FOOD MIXER & MINCER HEAD

Model: B20FA
Power: 750W
Voltage: 220V
Capacity: 20Lts
Size: (415x630x885)mm
Speed: 400 revolution/min



CODE: CT/164
FOOD AND DOUGH MIXER 40LTS

Model: 40H
Power: 1500W
Voltage: 380V
Capacity: 40Lts
Size: (580x590x1230)mm
Speed: 85~530 revolution/min



ROTISSERIES

Spark, Spin, Grill The Juiciest Meats

Crisp on the outside, juicy on the inside, everytime.

That's what you and your clients get with our grilling and rotisserie range.

ROTISSERIES



CODE: CT/266
CHICKEN ROTISSERIE +STAND
30 BIRDS

Model: EBR685
Power: 10KW
Voltage: 380V
Capacity: 30 Birds
Temperature: 50°C - 200°C
Size: (1075x965x1075)mm



CODE: CT/180
CHICKEN ROTISSERIE ELECTRIC
LARGE CABINET 18 BIRDS

Model: YXD201L
Power: 10KW
Voltage: 380V
Capacity: 36 Birds
Temp: 50°C - 300°C
Size: (1000x900x1000)mm



CODE: CT/181
VERTICAL ELECTRIC CHICKEN
ROASTER 12-18 BIRDS

Model: YXD-206P
Power: 7KW
Voltage: 220V
Temp: 50°C - 300°C
Capacity: 12-18 Birds
Size: (720x660x1500)mm



CODE: CT/241
TABLE TOP ELECTRIC ROTISSERIE
+WARMER

Model:
Power: 6KW
Voltage: 220V
Capacity: 12 - 16 Birds
Size: (1010x630x800)mm



CODE: CT/238
GAS ROTISSERIE VERTICAL
30 BIRDS

Model: YXD-306
Gas Power: 29487BTU
Gas Type: LPG
Capacity: 12-18 Birds
Size: (720x660x1500)mm



CODE: CT/338
RAPID SAUSAGE FILLER

Model:
Power:
Voltage:
Capacity:
Size: (450x570x1120)mm



SALAMANDARS

The Right Amount Of Heat For Your Treat

Serve your customers their food at the right temperature with the perfect finish. Our salamanders are a must-have for your kitchen.

SALAMANDARS



CODE: CT/172
ELECTRIC SALAMANDAR
NON ADJUST 46CM

Model: AT-936
Power: 2KW
Voltage: 220V
Size: (570x340x260)mm



CODE: CT/173
ELECTRIC SALAMANDAR
AUTO ADJUST 60CM

Model: EB-600
Power: 4KW
Voltage: 220V
Size: (600x450x500)mm



CODE: CT/201
ELECTRIC SALAMANDAR
MANUAL ADJUST 58CM

Model: MHL580S
Power: 6KW
Voltage: 220V
Size: (800x610x460)mm



CODE: CT/342
GAS SALAMANDAR

Model: RG14
Power:: 23885 BTU/Hr
Size: (620x440x610)mm



CODE: CT/343
GAS SALAMANDAR

Model: RG16
Power: 35145 BTU/Hr
Size: (880x440x610)mm



GRIDDLE/GRILL

Bring Out The Best In All You Grill

Grilled recipes are brought to life effortlessly on our grills and griddles. Choose a size that suits you and your kitchen here.

GRIDDLE/GRILL

CODE: CT/131
ELECTRIC GRIDDLE
Model: GH-818
Power: 3KW
Voltage: 220V
Size: (550x450x230)mm



CODE: CT/132
ELECTRIC GRILL GRIDDLE
Model: GH-822
Power: 4.4KW
Voltage: 220V
Size: (730x500x230) mm



CODE: CT/197
ELECTRIC GRILL
FULL GRILL
Model: EG-548-1
Power: 3KW
Voltage: 220V
Size: (555x473x293)mm



CODE: CT/199
ELECTRIC GRILL/GRIDDLE
HALF GRILL HALF FLAT
Model: EG-738-2
Power: 4.4KW
Voltage: 220V
Size: (735x524x293) mm



CODE: CT/198
ELECTRIC GRILL
FULL GRILL
Model: EG-548-2
Power: 3KW
Voltage: 220V
Size: (555x473x293)mm



CODE: CT/200
ELECTRIC GRILL/GRIDDLE
HALF GRILL HALF FLAT
Model: EG-618-2
Power: 6KW
Voltage: 220V
Size: (620x613x365)mm



CODE: CT/239
GAS GRIDDLE
Model: GH-720
Power Gas: 36,000 B.T.U.
Ignition: Electronic
Size: (730x550x550)mm



CODE: CT/240
GAS GRILL/GRIDDLE
Model: GH-722
Power Gas: 36,000 B.T.U.
Ignition: Electronic
Size: (730x550x550) mm



CODE: CT/359
GAS GRIDDLE BBQ LAVA ROCK
Model:
Power: 63MJ
Size: (610x660x390)mm



VEGETABLE CUTTERS

Chop, Slice And Dice Your Veggies Effortlessly

Our vegetable cutters are here to help you achieve consistency and make your life in the kitchen easier. However much you need to chop, slice and dice, our vegetable cutters can take care of it.

VEGETABLE CUTTERS



CODE: CT/167
SUGARCANE PRESS MACHINE 60KG

Model: YZ-28B
Power: 550W
Voltage: 220V
Productivity: 200~300Kg/h
Size: (520x550x920)mm



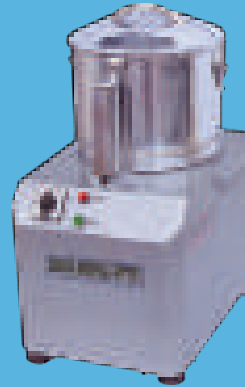
CODE: CT/186
COMPACT SUGARCANE PRESS
STAINLESS STEEL BODY

Model: TYZ-8
Power: 550W
Voltage: 220V
Productivity: 200~300Kg/h
Size: (450x450x480)mm



CODE: CT/279
VEGETABLE SLICER 13LTS
STAINLESS STEEL

Model: QS503A
Power: 0.65KW
Voltage: 220V
Capacity: 13 Lts
Size: (230x300x480)mm



CODE: CT/202
1 BLADE VEGETABLE SLICER 5LTS
STAINLESS STEEL

Model: Q505
Power: 1.5KW
Voltage: 220V
Capacity: 5 Lts
Size: (305x380x530)mm



CODE: CT/188
VEGETABLE CUTTER+FRUIT PRESS
5 BLADES # S/STEEL

Model: TR-21
Power: 250W
Voltage: 220V
Productivity: 120Kg/h
Size: (230x440x400)mm



CODE: CT/227
FINE CUTTER

Model: TQ5
Power: 370W
Voltage: 220V
Productivity: 120 Kg/h
Size: (420x525x536)mm



JUICE DISPENSERS

Tap Into The Delights Their Taste Buds Desire

Bring the enrichment of cold and pulpy beverages to your kitchen. Our juice dispensers will keep your juices fresh and your customers intrigued.

JUICE DISPENSERS



CODE: CT/229
JUICE DISPENSER 1x18LTS
1 STATION

Model: CH-18L
Voltage: 220V
Volume: 18 Lts
Temperature: 7°C - 12°C



CODE: CT/223
JUICE DISPENSER 2x18LTS
2 STATION

Model: CH-18LX2
Voltage: 220V
Volume: 2x18 Lts
Temperature: 7°C - 12°C



CODE: CT/224
JUICE DISPENSER 3x18LTS
3 STATION

Model: CH-18LX3
Voltage: 220V
Volume: 3x18 Lts
Temperature: 7°C - 12°C



CODE: CT/298
JUICE DISPENSER 2x18LTS
2 STATION

Model: LRSJ18x2
Voltage: 220V
Volume: 2x18 Lts
Temperature: 7°C - 12°C



CODE: CT/299
JUICE DISPENSER 3x18LTS
3 STATION

Model: LRSJ18x3
Voltage: 220V
Volume: 3x18 Lts
Temperature: 7°C - 12°C



CODE: CT/248
JUICE DISPENSER 2x12LTS
2 STATION

Model: LSP-12X2
Power: 180W
Voltage: 220V
Capacity: 2x12Lts
Size: (410x430x650)mm



CODE: CT/249
JUICE DISPENSER 3x12LTS
3 STATION

Model: LSP-12X3
Power: 230W
Voltage: 220V
Capacity: 3x12Lts
Size: (610x430x650)mm



SNACK MAKERS

Make Snack Time, Fun Time

For all your sweet and savoury snack creations, our snack makers are made to ease every chef's pursuit to please their clients.

SNACK MAKERS



CODE: CT/125
4 SLOT TOASTER
Model: EB-4
Power: 2KW
Voltage: 220V
Size: (370x210x225)mm



CODE: CT/126
6 SLOT TOASTER
Model: EB-6
Power: 3KW
Voltage: 220V
Size: (460x210x225)mm



CODE: CT/233
ELECTRIC CONVEYOR TOASTER
Model: TT-300
Power: 1.94KW
Voltage: 220V
Output: 300 – 350 Slices/h
Size: (418x368x387)mm



CODE: CT/363
ELECTRIC CONVEYOR TOASTER
Model: TT-150
Power: 1.94KW
Voltage: 220V
Output: 150 – 270 Slices/h
Size: (418x368x387)mm



CODE: CT/128
SINGLE HEAD WAFFLE MAKER
Model: EB-250
Power: 1KW
Voltage: 220V
Size: (250x380x300)mm

- Temperature & time setting



CODE: CT/281
DOUBLE HEAD WAFFLE MAKER
Model: UWB-2
Power: 1KWx2
Voltage: 220V
Size: (500x380x300)m

- Temperature & time setting



CODE: CT/364
ELECTRIC CONE WAFFLE MAKER
WITH CONE
Model:
Power: 1KW
Voltage: 220V
Size: (360x250x230)mm



CODE: CT/174
SINGLE HEAD TOASTER
GRILL PRESS
Model: GH-811E
Power: 3.6KW
Voltage: 220V
Temp: 50°C – 300°C
Size: (300x330x200)mm

SNACK MAKERS



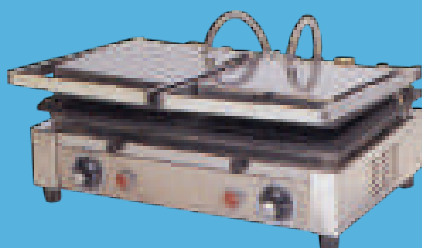
CODE: CT/175
DOUBLE HEAD TOASTER
GRILL PRESS

Model: GH-813
Power: 3600W
Voltage: 220V
Temp: 50°C – 300°C
Size: (580x330x200)mm



CODE: CT/118
GRILL EXPRESS
+ SANDWICH TOASTER

Model: GHD-815
Power: 2.5KW
Voltage: 220V
Size: (450x370x220)mm



CODE: CT/170
DOUBLE TOASTER GRILL PRESS
STAINLESS STEEL

Model: GH-811E
Power: 3KW
Voltage: 220V
Size: (520x370x200)mm



CODE: CT/196
HOT DOG ROLLER
11 BAR

Model: CT/196
Power: 1.1KW
Voltage: 220V
Size: (553x475x175)mm



CODE: CT/120
HOT DOG ROLLER
+ COVER 5 BARS

Model: EB-05



CODE: CT/127
POPCORN MACHINE

Model: EB-08
Power: 1.5KW
Voltage: 220V
Size: (520x400x670)mm

- Full toughened glass
- High efficient heating system and infrared warming light
- Drawer-type crumb tray for easy cleaning



FREEZING EQUIPMENT

Long Lasting Freezing

Sometimes it can get a little hot in the kitchen. Our commercial freezing equipment will keep your produce fresh for longer.

FREEZING EQUIPMENTS

CODE: CF/101
SINGLE DOOR S/STEEL FRIDGE 25CU.FT



- Capacity: 25 Cu.Ft.
- Temperature range: 0°C ~ 10°C
- Danfoss compressor
- Heavy stainless steel construction
- Inner fan for fast cooling and even temperature distribution
- Low energy consumption with polyurethane foaming isolation, retaining temperature for longer
- Removable bottom mount for easy cleaning & maintenance of condensor
- Frost free
- LCD temperature display
- Safe door lock
- Adjustable shelves

CODE: CF/102
DOUBLE DOOR S/STEEL FRIDGE 50CU.FT



- Capacity: 50 Cu.Ft.
- Temperature range: 0°C ~ 10°C
- Danfoss compressor
- Heavy stainless steel construction
- Inner fan for fast cooling and even temperature distribution
- Low energy consumption with polyurethane foaming isolation, retaining temperature for longer
- Removable bottom mount for easy cleaning & maintenance of condensor
- Frost free
- LCD temperature display
- Safe door lock
- Adjustable shelves

CODE: CF/103
SINGLE DOOR S/STEEL FREEZER 25CU.FT



- Capacity: 25 Cu.Ft.
- Temperature range: -15°C ~ -45°C
- Danfoss compressor
- Heavy stainless steel construction
- Inner fan for fast cooling and even temperature distribution
- Low energy consumption with polyurethane foaming isolation, retaining temperature for longer
- Removable bottom mount for easy cleaning & maintenance of condensor
- Frost free
- LCD temperature display
- Safe door lock
- Adjustable shelves

CODE: CF/104
DOUBLE DOOR S/STEEL FREEZER 50CU.FT



- Capacity: 50 Cu.Ft.
- Temperature range: -15°C ~ -45°C
- Danfoss compressor
- Heavy stainless steel construction
- Inner fan for fast cooling and even temperature distribution
- Low energy consumption with polyurethane foaming isolation, retaining temperature for longer
- Removable bottom mount for easy cleaning & maintenance of condensor
- Frost free
- LCD temperature display
- Safe door lock
- Adjustable shelves



UNDER COUNTER CHILLERS

Easy Access

Our under counter chillers are a great way to save space in your commercial kitchen while keeping the produce and products you need close. They come in various shapes and sizes to suit your kitchen.

UNDER COUNTER CHILLER



CODE: CF/164
STAINLESS STEEL UNDER COUNTER CHILLER 2 DOORS

Model: TG14
Volume Cu.Ft (L): 13Cu.Ft (318L)
Doors: 2
Temperature: 0°C ~ +10°C
Refrigerant: R134a
Size (WDH): 1400x700x850mm



CODE: CF/165
STAINLESS STEEL UNDER COUNTER CHILLER 3 DOORS

Model: TG18
Volume Cu.Ft (L): 19Cu.Ft (497L)
Doors: 3
Temperature: 0°C ~ +10°C
Refrigerant: R134a
Size (WDH): 1875x700x850mm



CODE: CF/174
GLASS DOOR UNDER COUNTER CHILLER
2 DOOR

Model: SG2
Volume Cu.Ft (L): 13Cu.Ft (340L)
Doors: 2
Temperature: 0°C ~ 10°C
Cooling System: Ventilated
Controller Type: Digital
Size (WDH): 1462x520x860mm



CODE: CF/175
GLASS DOOR UNDER COUNTER CHILLER
3 DOOR

Model: SG3
Volume Cu.Ft (L): 19Cu.Ft (510L)
Doors: 3
Temperature: 0°C ~ 10°C
Cooling System: Ventilated
Controller Type: Digital
Size (WDH): 2002x520x860mm



CODE: CF/185
SALAD SHOWCASE

Model: VRX1860
Volume: 57L
Temperature: 0°C ~ +10°C
Refrigerant: R134a
Cooling System: Ventilated
Controller Type: Digital Display
Size (WDH): 1800x225x335mm



ICE CUBE MAKERS & ICE CREAM MACHINE

The Ultimate Cool

A ready supply of Ice is essential for every kitchen. Whether you're serving your customers cool, refreshing drinks or ice cream, our ice cube makers and ice cream machines are perfect for your kitchen.

ICE CUBE MAKERS & ICE CREAM MACHINE



CODE: CF/170
ICE CUBE MAKER
15KG/24HRS

Refrigerant: R134a
Control: Automatic
Ice storage capacity: 0.8kg
Ice capacity: 15kg/24Hrs (0.62Kg/Hr)
Ice shape: Bullet shape



CODE: CF/172
ICE CUBE MAKER
15KG/24HRS

Control: Automatic
Ice storage capacity: 0.8kg
Ice capacity: 15kg/24Hrs (0.62Kg/Hr)
Ice shape: Bullet shape



CODE: CF/160
MINI ICE CUBE MAKER
15KG/24HRS

Capacity: 15Kg/24Hours
Power: 210
Dimensions: 360x440x450



CODE: CF/150
COMMERCIAL ICE MAKER
20KG/24HRS

Material: 304/2B stainless Steel
Energy saving
Non Freon refrigerant - R134a
Automatic control
Compressor brand: Zannusi
Ice storage capacity: 6kg
Ice capacity: 20kg/24Hrs (0.83Kg/Hr)
Bullet ice shape



CODE: CF/151
COMMERCIAL ICE MAKER
30-40KG/24HRS

Material: 304/2B stainless Steel
Energy saving
Non Freon refrigerant - R134a
Automatic control
Compressor brand: Zannusi
Ice storage capacity: 25kg
Ice capacity: 30kg/24Hrs (1.25Kg/Hr)
Bullet ice shape



CODE: CF/152
COMMERCIAL ICE MAKER
60KG/24HRS

Material: 304/2B stainless Steel
Energy saving
Non Freon refrigerant - R134a
Automatic control
Compressor brand: Zannusi
Ice storage capacity: 55kg
Ice capacity: 60kg/24Hrs (2.5Kg/Hr)
Bullet ice shape



CODE: CF/155
COMMERCIAL ICE MAKER
150KG/24HRS

Material: 304/2B stainless Steel
Energy saving
Non Freon refrigerant - R134a
Automatic control
Compressor brand: Zannusi
Ice storage capacity: 55kg
Ice capacity: 150kg/24Hrs (7.5Kg/Hr)
Bullet ice shape



CODE: CT/247
ICE CREAM MACHINE

Model: S218/1-L
Power: 1.7KW
Voltage: 220V
Output: 18Lts/Hour
Size: (510x780x800)mm

1 Flavor counter top with mix refrigeration



SHOWCASE DISPLAYS

Proud Displays

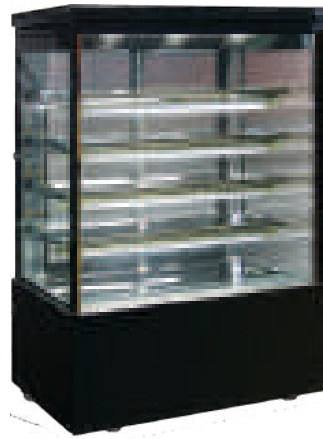
Since your kitchen takes so much pride in creating culinary delights, we make a variety of showcase displays that improve visibility of your delicious creations.

SHOWCASE DISPLAYS



CODE: CF/250
SHOWCASE DISPLAY 1.5M

Model: DZH-15Z
Power: 1Kw
Voltage: 220V
Temp: 2°C ~ 8°C
Size: 1500x980x1300



CODE: CF/256
SHOWCASE DISPLAY 1.2M

Model: DDL-12
Power: 1.2Kw
Voltage: 220V
Temp: 2°C ~ 8°C
Size: 1200x815x1800



CODE: CF/251
SHOWCASE DISPLAY 1.2M

Model: DDY-12
Power: 1Kw
Voltage: 220V
Temp: 2°C ~ 8°C
Size: 1200x750x1250



CODE: CF/252
SHOWCASE DISPLAY 1.5M

Model: DDY-15
Power: 0.9Kw
Voltage: 220V
Temp: 2°C ~ 8°C
Size: 1500x750x1250



CODE: CF/253
SHOWCASE DISPLAY 1.8M

Model: DDY-18
Power: 1Kw
Voltage: 220V
Temp: 2°C ~ 8°C
Size: 1800x750x1250



CODE: CF/254
SHOWCASE DISPLAY 1.2M

Model: DZF-12
Power: 0.88Kw
Voltage: 220V
Temp: 2°C ~ 8°C
Size: 1200x730x1350



CODE: CF/255
SHOWCASE DISPLAY 1.5M

Model: DZF-15
Power: 1Kw
Voltage: 220V
Temp: 2°C ~ 8°C
Size: 1500x730x1350



MIXING AND BAKERY EQUIPMENT + ACCESSORIES

Stir Up Some Delicious Delights

We know you love to use only the best for your baked treats. Which is why our baking and mixing equipment has been made specially to ensure the best results treat after treat.

MIXING AND BAKERY EQUIPMENT + ACCESSORIES



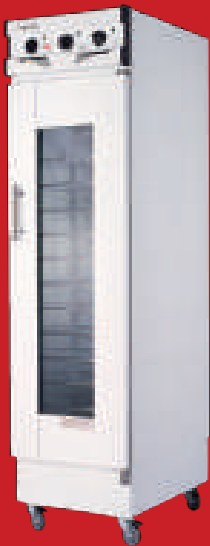
CODE: CT/216
ROTARY ELECTRIC OVEN

Power: 26KW
Voltage: 380V
No. of trays: 11
Size of tray: (635x533x51)mm
Trays distance: 127mm
Size: (1200x1920x2170)mm
Production: 60 Loaves at a time
Capacity:
Temperature: 0°C - 300°C



CODE: CT/204
FOOD MIXER 60LTS

Model: B60
Power: 2.8KW
Voltage: 380V
Bowl volume: 60Lts
Size: (590x580x1130)mm
Kneading: 20Kgs
capacity:
Mixing Speed: 109/216 r/min



CODE: CT/213
PROVER

Model: FX-13A
Power: 2.7KW
Voltage: 220V
Standard pans: 13 Pcs
Size: (500x710x1740)mm



CODE: CT/169
BREAD SLICER

Power: 0.43KW.
Slicing: 12mm.
thickness:
Pieces/time: 30.
Size: (650x740x750)mm.
Production: 200 - 350 Loaves
capacity: per hour



CODE: CT/242
STEEL SHELF RACK

Model: PJ-15
Size: (680x550x1800)mm
Weight: 14Kgs



CODE: CT/243
STEEL SHELF RACK

Model: PJ-30
Size: (900x450x1950)mm
Weight: 27Kgs



COFFEE MAKER AND GRINDER

Irresistible Brews Every Time!

Bring life to your kitchen with the irresistible aroma of freshly ground coffee and the delectable taste of freshly brewed coffee.

COFFEE MAKER AND GRINDER



CODE: CT/450
CAPPUCCINO MACHINE
2 GROUP

Model: T2
Colour: Brown
Power: 4000W
Voltage: 220V
Frequency: 50Hz
Size: (700x540x550)mm



CODE: CT/451
CAPPUCCINO MACHINE
2 GROUP

Model: N2
Colour: S/Steel
Power: 4000W
Voltage: 220V
Frequency: 50Hz
Size: (700x540x590)mm



CODE: CT/325
COFFEE MAKER/WARMER

Power: 2.1Kw
Volts: 220-240V
Size: (219x419x478)mm

Boil water, spray coffee powder and
filter coffee automatically.



CODE: CT/452
PROFESSIONAL COFFEE GRINDER

Horse power: $\frac{1}{2}$ HP/360W
Rotation: 1400 R.P.M
Funnel capacity: 1.2 kg
Grinding power: 10[^] 15 kg/hour

Feature:

- Artistic design, heavy duty.
- Fine coarse precision adjustment.
- Coffee dosing tray chamber
- Large grinding blade 64mm

Professional Coffee Grinder for
Cafe Restaurant.



BLENDERS & JUICERS

Always A Delight!

Get the most out of delicious fruits and vegetables to create decadent meals and drinks.

BLENDERS AND JUICERS



CODE: CT/405
COMMERCIAL BLENDER 2200W

2200W motor
Variable speed, pulse function control
High quality stainless steel blades
High quality durable polycarbonate jar 2.8Lts
Special fruit & vegetable chopping function
Speed - 3000rpm



CODE: CT/117
HEAVY DUTY JUICER

Model: M-4000
Power: 0.18KW
Voltage: 220V
Speed: 6500 rpm
Size: (240x220x380)mm



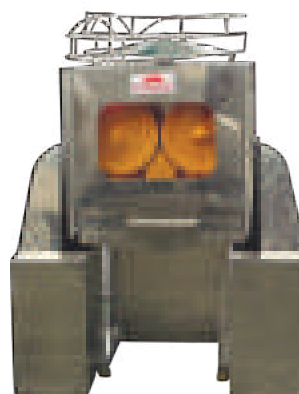
CODE: CT/183
HEAVY DUTY JUICER

Model: 1000JP
Power: 450W
Voltage: 220V
Size: (400x260x350)mm



CODE: CT/322
HEAVY DUTY CARROT JUICER

Model: WF-B2000
Power: 500W
Voltage: 220V
Speed: 2800rpm



CODE: CT/288
CONTINUOUS ORANGE JUICER

Power: 0.37KW
Voltage: 220V
Frequency: 50Hz
Size: (230x230x410)mm



CODE: CT/286
MANUAL ORANGE/LEMON JUICER



CODE: CT/147
1 HEAD MILK SHAKER

Model: SD-F4
Power: 100W
Voltage: 220V
Capacity: 1Lt
Size: (175x195x480)mm



CLEANING EQUIPMENT

Spick and Span

When it comes to creating first impressions, a clean establishment makes all the difference. Keep your space clean and tidy, no matter the size.

DISH WASHERS, GLASS WASHERS & PLATE WARMERS



CODE: CT/329
DISH WASHER

| | |
|----------------------|---------------------|
| Capacity: | 900 Plates (12")/Hr |
| Rinse cycle: | 60/90/120 Seconds |
| Wash pump: | 0.735Kw |
| Wash tank capacity: | 33Lts |
| Wash tank heater: | 3Kw |
| Wash temperature: | 60°C |
| Rinse tank capacity: | 9Lts |
| Rinse tank heater: | 12Kw |
| Rinse temperature: | 85°C |
| Electrical input: | 3N-380V/50Hz |
| Hot water input: | 200Kpa-500Kpa |
| Size: | 705x830x1500 mm |

Water pump and microcomputer control circuit from famous international suppliers. The wash temperature is showed in time. it is the perfect choice for your bar, cafe or coffee lounge. Simply select the desired wash cycle time



CODE: CT/330
GLASS WASHER

| | |
|----------------------|----------------------------------|
| Capacity: | 1,200 Glasses/items/Hr |
| Wash cycle time: | Variable from 1 to 2 1/2 minutes |
| Wash pump: | 0.28Kw |
| Wash tank capacity: | 12Lts |
| Wash tank heater: | 0.25Kw/0.5Kw |
| Wash temperature: | 60°C-65°C |
| Rinse tank capacity: | 8Lts |
| Rinse tank heater: | 2.4Kw/6Kw(380V) |
| Rinse temperature: | 82°C |
| Electrical input: | 240V/380V 50Hz |
| Hot water input: | 200Kpa-400Kpa |
| Size: | 500x550x850 mm |



CODE: CT/340
DISH WASHER PRE-CLEANING TABLE

- Dimensions: 120x74x86Cm
- With waste discharge hole
- With backsplash
- Height 10cm.



CODE: CT/341
DISH WASHER EXIT TABLE

- Dimensions: 70x74x86 cm
- With backsplash
- Height 10cm.



CODE: CT/331
PLATE WARMER 1x75

| | |
|-----------------|--|
| Capacity: | 75 Plates per holder depending on thickness. |
| Plate diameter: | Adjustable 8-12" |
| Power: | 1Kw |
| Volts: | 220-240V |
| Size: | (420x460x930)mm |



CODE: CT/332
PLATE WARMER 2x75

| | |
|-----------------|--|
| Capacity: | 75 Plates per holder depending on thickness. |
| Plate diameter: | Adjustable 8-12" |
| Power: | 2Kw |
| Volts: | 220-240V |
| Size: | (420x800x930)mm |

COMMERCIAL FLOOR SCRUBBERS



CODE: CT/352
CLEANWILL COMMERCIAL FLOOR SCRUBBER
17" 150RPM

Brush diameter: 430mm (17")
Brush speed: 150rpm
Cable: 15M

Features:

- Power: 1HP
- Ergonomic designed operating handle with high solid plastic
- Powerful, heavy duty motor and gear box
- Triple planetary diagonal gears of high quality steel
- 3 planetary diagonal gears ensure quiet operation and long life
- Locking device in American style
- Mains powered



CODE: CT/350
CLEANWILL COMMERCIAL FLOOR SCRUBBER
18" 200RPM

Brush diameter: 455mm (18")
Suction width: 760mm
Cleaning width: 455mm
Efficiency: 1800m²/h
Solution tank capacity: 42Lts
Recovery tank capacity: 44Lts
Brush speed: 200rpm
Brush pressure: 25Kg
Brush motor power: 550W
Suction motor power: 550W
Cable: 25M
Size: 1250x630x1085mm

Features:

- Automatic assembly brush pad
- Electromagnetism valve device
- Continuous working time > 3hrs



CODE: CT/351
CLEANWILL COMMERCIAL FLOOR SCRUBBER
17" 175RPM

Brush diameter: 430mm (17")
Suction width: 450mm
Cleaning width: 430mm
Efficiency: 900m²/h
Solution tank capacity: 28Lts
Recovery tank capacity: 30Lts
Brush speed: 175rpm
Brush pressure: 25Kg
Brush motor power: 550W
Suction motor power: 800W
Cable: 25M 25M

Features:

- Automatic assembly brush pad
- Fold away handle design
- Electromagnetism valve device
- Alternating current directly, no working time restricted



DISPLAY WARMERS

Pretty Warm From Kitchen To Plate

Our display warmers are ideal for catering services and kitchens that crave perfection in how their warm food and snacks are stored awaiting sales. With our variety of options and features, there's something for every kitchen.

DISPLAY WARMERS



CODE: CT/323
HOT SNACK DISPLAY WARMER

Power: 1Kw
Volts: 220-240V
Size: (640x360x530)mm

Keep warm & humidity, even temperature,
two sides with heat resistance glass.



CODE: CT/324
HOT FOOD DISPLAY WARMER

Power: 2.8Kw
Volts: 220-240V
Size: (1075x775x773)mm

The upper & lower layers can be equipped with
orbit-rack or food-tray, special for displaying
hamburgers and fried chickens.



CODE: CT/366
PIE WARMER

- Even temperature and humidity
- With light
- The front and the rear door can open
- Different display shelf
- Curved glass showcase

OUTDOOR GAS HEATER



CODE: RG/536
OUTDOOR GAS HEATER

- Impressive living flame gas patio heater with quartz glass fire tube
- Powerful heater at 9500W output with anti-tip safety system
- Floor-standing design with sleek stainless steel finish
- Propane gas consumption is around 0.30kg/h
- Dimensions: 52cm (W) x 221cm (H); Reflector - 46cm



BAINÉ MARIE

Warm It Up

Keep your food, sauces and gravies stored and ready to serve at just the right temperature. Our Baine maries are ideal for outdoor catering, buffets and all your delicate food needs.



CODE: CT/133
3 HEAD BAINES MARIE
Model: EH-3124
Power: 1.5KW
Voltage: 220V
Temp: 50°C – 85°C
Size: (1400x300x220)mm



CODE: CT/246
4 HEAD BAINES MARIE
Model: BS-4V
Power: 1.6KW
Voltage: 220V
Size: (700x590x230)mm



CODE: CT/333
DRY HOT CUPBOARD
+BAINES MARIE
Power: 2Kw
Volts: 220-240V
Size: 1060x668x900 mm
- Max. GN Pans Height: 150mm
- With 4x1/2 & 1x1/1 GN pans
- Dry Heating



CODE: CT/268
4 HEAD BAINES MARIE SQUARE
Model: BS-4T
Power: 1.5KW
Voltage: 220V
Temp: 20°C ~ 85°C
Size: (694x590x240)mm



CODE: CT/267
4 HEAD BAINES MARIE+GLASS

Model: BSB-4
Power: 1.5KW
Voltage: 220V
Size: (1170x350x315)mm



CODE: CT/365
BAINES MARIE 7 HEAD +COVER

Heavy duty stainless steel construction
- Fully adjustable temperature dial
- Wet heat only
- Extra large capacity complete with
7 x 1/3 GN pans and lids
- Holds containers up to 150mm deep
- Drain tap fitted at front for easy dispersal of water
- Ideal for holding cooked food / vegetables etc
- Dimensions: 1393mm W x 365mm D x 330mm H



Contact us:

+254 725884197

info@hypermart.co.ke

www.caterina.co.ke

 sold and serviced by Ramtons



